

Columbia Bicycle and Motor Cycle

LAMPS

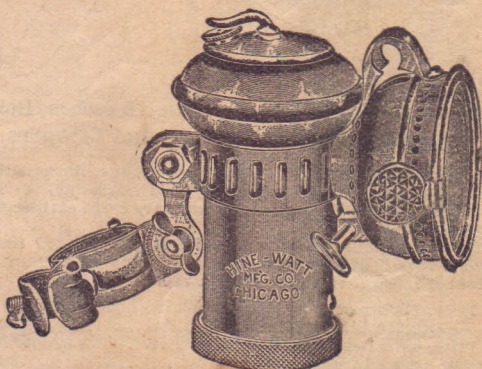
MANUFACTURED BY THE

Hine-Watt Manufacturing Co.

60 Wabash Avenue, Chicago, U. S. A.

Columbia Automatic Gas Lamp

For Bicycles, Buggies and Motor Vehicles



FIVE PATENTS ALLOWED

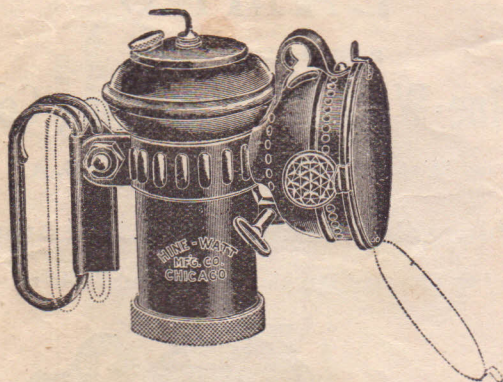
The Gas Lamp with a **CLEAN RECORD**.
Operates the same as your *Old Barn Lantern*.
Turns down or out at once. Lights at once.
NO WAITING IN EITHER CASE.

Nickel-plated over brass or gun metal finish, powerful double convex lens, two piece removable burner, gas valve for regulating flame, or turning out entirely. Patent water distributor allows carbide charge to be used repeatedly until exhausted. Self cleaning water valve; parabolic reflector, combination fork and head bracket, no wicks, no rolled threads to stick, no flimsy material, diameter of face, $2\frac{3}{4}$ inches.

Price, Gun Metal and Nickel-Plate.....\$3.10

Columbia Watchman's Lamp.

"Pinkerton Model"



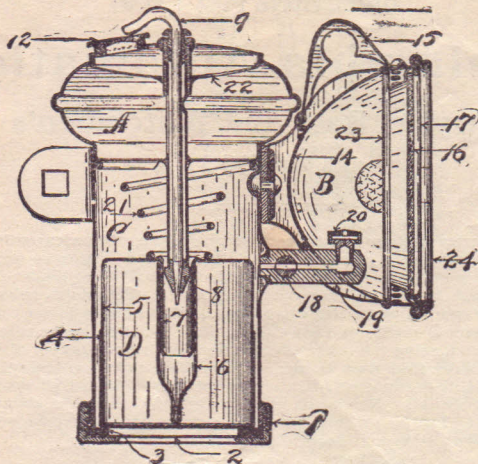
For Watchmen, Trainmen, Meter Readers, Boiler Inspectors, Miners, Hunters and Campers.

Same general description of lamp on page one. Burns carbide will burn continuously five hours on one charge. Persons desiring to use the lamp all night can carry extra carbide cartridge in pocket.

The combination bracket or handle is so arranged that it forms a hook if desired, so lamp can be hung on a fence, side of boat or ledge of rock when not in use.

Price, Nickel or Gun Metal finish, without Dark Lantern Shutter.....\$3.50
 Price, with Dark Lantern Shutter..... 4.50
 Two 2-pound cans Carbide, extra..... .50

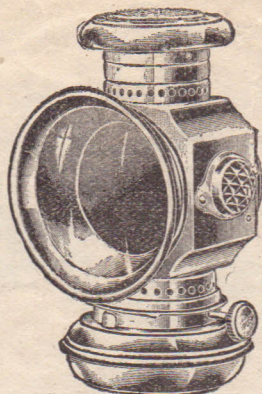
Columbia Bicycle, Bale, Watchmen's and Jack Gas Lamp Parts.



Prices Postage Paid.

A.	Lamp Body Complete.....	\$1 80
B.	Head Complete.....	1.00
D.	Carbide Cup Complete.....	.50
1	Bottom Cap.....	.17
2	Bottom Plate.....	.10
3	Rubber Gasket.....	.10
5	Carbide Cup Body.....	.30
6	Water Distributer.....	.30
9	Water Valve.....	.15
12	Filler Cap.....	.10
14	Reflector.....	.30
16	Front Glass.....	.10
17	Lens Retainer Wire.....	.10
18	Gas Valve Complete.....	.40
	Gas Valve Stem, Screw and Washer.....	.25
20	Burner.....	.17
21	Spiral Spring.....	.17
23	Reflector Retainer Wire.....	.10
	Buggy Dash Bracket.....	.40
	Bicycle Bracket.....	.40
	Hand Bracket.....	.70
	Thumb Nut and Bolt.....	.10
	Bracket Extension, no Bolts.....	.14
	Front Door, without Glass or Retainer Wire.....	.30
	Screw and Washer for Gas Valve.....	.10
	Double Convex Lens.....	.30

Columbia Oil Bicycle Lamp.



Nickel-plated over brass and highly polished. Burns kerosene. Heavy bent lens, combination fork and head bracket. Diameter of face $2\frac{3}{4}$ inches, height 6 inches, weight 18 oz.
 Price.....\$1.80

Directions Columbia Oil Lamp.

To Remove Oil Pot. Press on the projecting arm, releasing oil pot lock; turn oil pot a little to the right or left.

To Remove Lens. Turn lens holder to the left. In replacing the lens be sure that all three lugs on frame have entered slots, and that the lens holder is turned up tight.

To Remove Reflectors for Cleaning. Remove oil pot, then lens. The reflectors will then drop out. Release fingers on back to separate the reflectors. Polish with any good silver polish. In replacing, be sure that lip or pin enters slot in frame so as to bring hole in front of reflector at the top.

To Obtain a Good Light. Use a good quality of wick and good kerosene only; always keep the wick long enough to touch bottom of oil pot. Rub off the char on the wick before lighting. Do not cut the wick.

To Clean Burner. Wash in hot soap or soda water.

To Light from Either Side. Raise sash holding jewel.

Price List of Parts Columbia Oil Lamp.

Tops.....	\$0.20
Body.....	.70
Jewels.....	.20
Oil Pot and Burner.....	.70
Oil Pot without Burner.....	.40
Burner and Wick.....	.30
Wick Adjustor Button.....	.20
Lens Holder.....	.20
Lens.....	.12
Front Reflector.....	.18
Back Reflector.....	.18
Thumb Nut and Bolt, either style.....	.10
Comb Head and Fork Bracket.....	.40
Bracket Clamps and Rivets.....	.30

Columbia Jack Lamp and Generator.



For Hunters, Fishermen, Miners and Sportsmen.

Throws a powerful white light. Invaluable for hunting Coon, Opossum and other nocturnal animals.

Generator 11 inches long, 2 inches in diameter, weight 20 oz., carbide capacity 7 oz., (enough to run the lamp all night). Made of brass heavily nickel-plated, attached to cartridge bit.

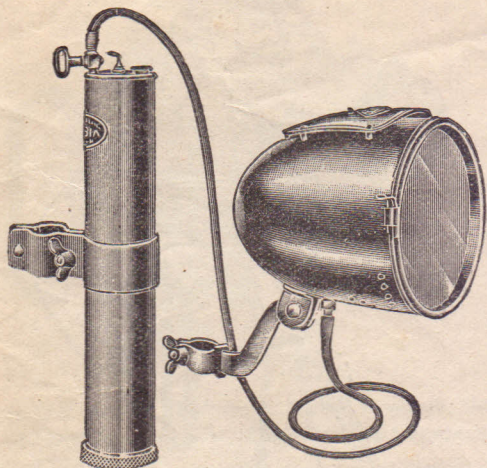
Headlight, weight 6 oz. Powerful parabolic reflector, diameter of face $2\frac{3}{4}$ inches, straps to front of hat and is connected to generator by rubber tubing.

Price complete.....\$8.00

Motor Cycle Lamp Parts.

Burner.....	\$0.25
Front Door.....	1.00
Front Glass.....	.35
Lens Mirror.....	1.50
Lens Retainer Wire.....	.30
Bracket, Handle Bar.....	.80
Bracket Head.....	.40

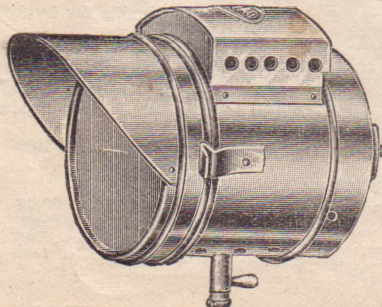
Columbia Motor Cycle Lamp, "Model M."
Complete with Generator, Brackets
and Tubing.



For Motor Cycles, Yachts and Boats. Will fit any Motor Cycle. The generator holds 8 oz. carbide, 11 inches long and 2 inches in diameter. Made of heavy brass, nickel-plated. Carbide chamber equipped with grating for separating used from unused carbide. Will work in an upright position or at an angle of 45 degrees.

"Head Light," Model M, nickel-plated over brass and highly polished German silver reflector, 5-inch opening, 6 inches deep, reflector 4 1/4 inches in diameter, 3/4-ft. Bray Burner.

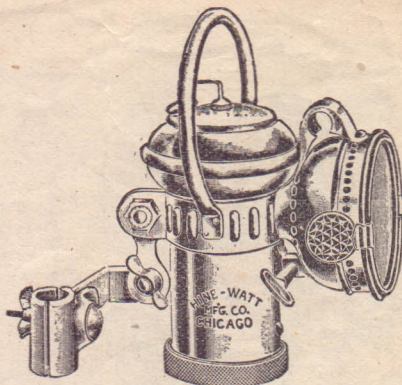
Price complete as shown in above cut.....\$8.00



Head Light,
Model L. used
in connection
with generator
shown in
above illustration.

"Model L." Head Light, split glass lens, 4-inch lens mirror, 5 1/2 in. high 5 1/2 in. deep, 4 1/2 in. front, nickel-plated complete with bracket and generator.....\$10.00

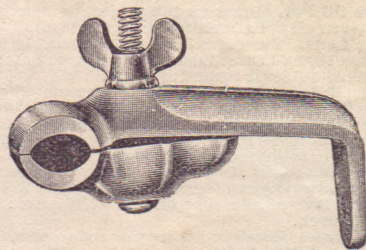
Columbia Bale Lamp.



Same as Columbia Automatic Bicycle Lamp shown on page 1. Made of heavy brass, gun metal, satin finish, equipped with bale handle, buggy bracket. A very popular gas lamp for buggies and small boats.

Price with Buggy or Bicycle Bracket.....\$3.50

Columbia Dash Bracket.



List price.....\$0.40

List of Parts Columbia Motor Cycle
and Jack Generator.

Carbide Cup, complete.....	\$0.85
Carbide Screen.....	.30
Bracket Band, Nut and Bolt.....	.45
Bottom Cap, complete.....	.35
Bottom Cap, alone.....	.17
Bottom Plate.....	.10
Rubber Gasket.....	.10
Filler Cap.....	.10
Gas Valve Complete.....	.40
Gas Valve Stem, Screw and Washer.....	.25
Rubber Tubing per foot.....	.12

DIRECTIONS FOR USING

Columbia Automatic Bicycle, Bale and Watchmen's Lamps

Unscrew bottom cap, take out carbide cup. Open gas valve by having thumb piece horizontal. Close water valve by turning stem at the top of the lamp to the right until nut binds; do not push hard. Fill reservoir with clean water up to splash diaphragm. Open water valve **two complete turns** to see that the water drops freely from valve point. Re-close water valve, and when using the lamp never under any circumstances open valve more than **two turns**. Fill carbide cup even full with carbide, then tap it several times to settle carbide and fill again until even full. Never put in only part of charge, but always fill full. Put on carbide cup cover, reverse cup and replace in lamp with stem up. Screw bottom cap on tight.

TO START LAMP

Open water valve **two complete turns**. See that gas valve thumb piece is horizontal, i. e., gas valve open. Shortly after lighting, that is when the flames come up well, turn off gas valve until you get a flame that is from 1-inch to 1½-inch in height. **Never burn lamp with gas valve wide open**. Do not close or change position of water valve while using lamp. When through close water valve and let generated gas burn out. Or, leave water valve open and turn off the gas valve, leaving gas valve closed. By burning lamp according to above directions for an hour each night, you should get four one hour burnings out of one charge of carbide. If you wish to stop for a few minutes or a few hours, simply turn off gas valve, leaving water valve open.

CAUTION

This lamp is equipped with our new separable burner. After long usage it is possible that it may become stopped up. This is the only separable burner on the market and in cleaning it pull it out of valve block and pull off the top cap of burner which holds lava tip, and scrape out the inside with the point of a knife. Always see that the small hole in lower end of burner is clear. In putting burner together see that the top part which holds lava tip is snapped down over the shank part of the burner as far as it will go.