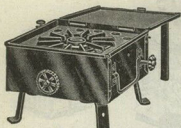


4910 CAMP STOVES.

GASOLINE.
FOLDING.

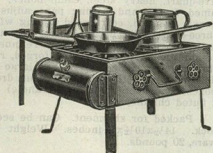


The No. 4M one burner stove has 6-inch grate and interior stationary tank of 1½ hours capacity. The only equipment furnished with this size is a pressure pump and funnel for filling the tank. Gasoline tank is protected from the heat by a jacket, double air chamber and partition. A meal for one or two people can be prepared on this marvelous little stove very satisfactorily.

Each
No. 4M—Dimensions, 9x9x4½ inches; weight, 8½ lbs. . . . \$10.00

The No. 2M has six inch grates and gas tank of sufficient capacity to last two and one-half hours. The No. 3M has eight inch grates to accommodate 10 in. fry pan with same tank capacity.

Full equipment consists of 1 fry pan, coffee pot, 1 each sugar and coffee retainer, pressure pump and funnel.



No. 2M and 3M Kit open.



Folded.

The accompanying cuts illustrate the Nos. 2M and 3M stove set up and also folded, with equipment, all of which is packed inside for transportation.

Each
No. 2M—Dimensions folded, 5½x10x18 inches; weight complete, 17 lbs. . . . \$21.00
No. 3M—Dimensions folded, 6x10x20 inches; weight complete, 20 lbs. . . . 23.00

MINERS' LAMPS.

GUY'S ACETYLENE.

PIT LAMPS.

Each
No. 23—Lamp; has large, deep, 3-inch brass reflector, highly polished; intended for inspectors and mining engineers; brass lamp; no extra bottom; weight each, 1 lb. \$1.30



MINERS' LAMPS.

GUY'S ACETYLENE.
PIT LAMPS.



Each
No. 22SL—Lamp; has 2¾ inch polished brass reflector fastened to lamp with lock-nut screwed on burner tube; reflector strongly reinforced on back to protect from accidents; intended for use in rooms or entries with high roofs; brass lamp, bright finish. \$1.40

Equipped with self lighter. Has a 2½-inch deep brass polished reflector intended for miners working in wet places or where the roof is low. The reflector is deep enough to protect the burner tip from water.

Each
No. 28SL—Lamp; polished brass finish. \$1.40



GUY'S LAMP SUPPLIES.

Lava Tips	Per Gross . . . \$2.60
Rubber Gaskets	2.00
Tip Reamers or Needles	7.00
Felts for Lamps	3.00
Reamer Cases—2 dozen size	4.50

Extra Bottoms—Brass	Per Dozen . . . \$3.00
-------------------------------	------------------------

NOTE—For Gasoline Torches see page 5078.

MINER' LAMP SUPPLY KITS.

GUY'S.



An assortment of the lamp supplies most frequently called for by the miner. Also the repair parts most liable to become lost or worn out, which require replacement. Kit contains 6 dozen flat rubber gaskets, 2 dozen felts, 2 dozen felt holders, 2 dozen screens, 12 dozen lava tips, 6 dozen reamers, put up in reamer cases, two in a case; 6 dozen flints, 1 dozen hexagon nuts, 1 dozen set screws, 1 dozen springs, 1 dozen caps, (these last four items are used in the make-up of the contrivance that slips on to the tube instead of being fastened on to the reflector.

Each
No. LSK—Miners Lamp Supply Kits; weight each, 2 lbs. \$14.00



JUSTRITE, ACETYLENE.

The Justrite self lighting lamps require no matches. To light, cover reflector with palm of hand, hold a few seconds, then draw hand downward quickly, rubbing over steel wheel.

The lever water feed enables the user to regulate the size of the flame; valve is operated by means of a lever sliding back and forth over notches.

The spiral water feed forces the water around the spiral, a distance of 7 inches, this increases the gas resistance, prevents waste and produces an even, steady flame.

Reflector is highly polished German silver; valve stem is made of brass tubing; clasp is new design made of spring brass, holds lamp secure to cap shield; burner cap is imported German lava fitted with 4 air holes near tip, this prevents clogging and carbonizing.

SELF LIGHTING.



Made of the best quality brass, hand soldered.

The water feed is regulated by a valve controlled by a lever fitting tightly over raised notches which prevents the lever from working loose. The valve can be adjusted to permit a free water flow.

The reflector is polished brass, 3-inch diameter with wire edge.

Each
No. 277 - X-Ray Carbide Lamp; weight each, 4 3/4 ounces.....\$1.46

Equipped with lever feed and a 2 1/4-inch reflector deeply concave.

Each
No. 417 - Miner's Lamp; polished brass finish; weight each, 5 oz.....\$1.46



Has lever feed and a 2 1/4-inch polished brass reflector.

Each
No. 85 - Miner's Lamp; complete with pocket carbide container; polished brass finish; weight each, 5 oz.....\$1.50



Equipped with Jewel metal tip and an extra bottom. Has spiral water feed and 2 1/4-inch polished brass reflector.

Each
No. 121 - Miner's Lamp; polished brass finish; weight each, 5 oz.....\$1.66



Furnished with a heavy nickel plated, highly polished reflector, 2 1/2-inch; burns 3 hours with one charge, producing a steady white 20 candle power light, which can be projected 200 feet.

Each
No. 100 - Mine Superintendents' Lamp; complete with reflector hood, extra carbide container, rubber gasket, felt backing and burner tips; weight each, 5 oz.....\$2.20



Invaluable to the sportsman, automobilist, farmer, miner or army officer.

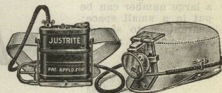
Can be used in the same manner as any oil lantern and will give a 20 candle power strong, white, brilliant light which can be projected a distance of 200 feet when the reflector is attached. Equipped with an ingenious safety device, allowing the escape of excess gas, should there be any; absolutely safe and reliable.

Each
No. 10 - Miner's Lantern; made of heavy brass, highly nickel plated and polished; height, 9 1/2 inches; width, 4 1/2 inches; equipped with German silver reflector; weight each, 1 1/2 lbs.....\$7.50
One in a fibre case.

HEADLIGHTS.

For Drivers, Motormen, Miners, Inspectors, Etc.

Gives a penetrating light. Protected by strong lens. Will not blow out. Self-lighting attachment. Matches not required.



Burns 10 hours on one charge of carbide and water. Strong, Durable, Compact.

Each
No. 44 - Without cap; weight of generator, 1 1/2 lbs.; weight of headlight, 5 oz.....\$7.50

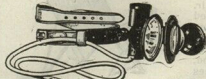
CAPS.

Made of best quality duck, lined with flannel; has black zinc and fibre-covered metal shield.

Per Dozen
No. 235 - Miners' Caps, made especially for use with Justrite head-lights; all sizes.....\$7.00

HUNTING SEARCH LIGHTS.

BRILLIANT, ACETYLENE.



A strong, well made light weight lamp, in black japanned finish. Throws a bright, penetrating light, is not affected by either wind, rain, heat or cold and is adapted for all kinds of work. Fitted

with a strap for wearing on hat or cap, so as to leave the hands entirely free; a hinge joint enables the light to be tilted up or down at any angle; hinged darkening cover fitting over lens; rubber tube connects light with generator, which may be worn on belt or carried in pocket; has detachable base and burner which are suitable for a table or camp lamp when removed. Burns carbide; one filling, 4 ounces; will burn eight hours. Weight of lamp and head strap, 10 ounces.

Each
No. 1SL - Style number one, with single lens and plain candle flame burner.....\$10.00

No. 1DL - Style number one, with double lens and plain candle flame burner.....11.00

No. 2DL - Style number two, with double lens and adjustable candle flame burner.....11.30

No. 3DL - Style number three, with double lens and adjustable flat flame burner.....11.60

No. 41L - Style number three, with interchangeable lens, adjustable flat flame burner and self lighter.....12.30