

---

---

Dunham,  
Carrigan &  
Hayden Co.

---

---



Dunham,  
Carrigan &  
Hayden Co.

---

---

HARDWARE

---

---



---

---

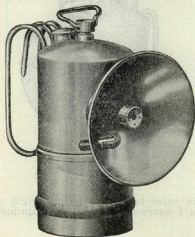
SAN FRANCISCO

# CARBIDE LAMPS

## PIONEER "I. T. P."

One of the main advantages of the Pioneer I. T. P. (It's Trouble-Proof) line of lamps is the automatic feed. This never gets out of order and absolutely regulates the flame so that it burns steadily and without flickering, the same size until the last atom of carbide is used up. These lamps show a saving of 20% and over in the use of carbide. Pressure never exceeds four and never goes below two inches.

### SUPERINTENDENT'S LAMP

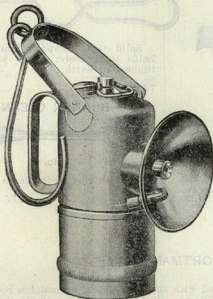


No. 160

Seamless drawn brass, heavily nickel-plated. Equipped with wind shield, lava burner and rigid movable reflector. Weight 11 oz.; height 5 1/4 in. Burns six hours on one charge.

No. 160 ..... Each \$3.00

### HAND LAMP

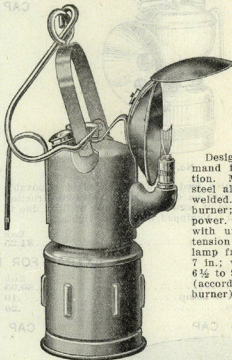


No. 205

Heavy drawn steel, all parts welded with oxy-acetylene. Equipped with 3 in. sparker, rigid, removable reflector and wind shield. Absolutely cannot be blown out. Horizontal flame. Height 6 1/2 in.; weight 19 oz. Burns ten hours on one charge.

No. 205 ..... Each \$3.50

### HAND LAMP



No. 210—"BIG JIM"

Designed to meet the demand for greater illumination. Made of heavy drawn steel all parts oxy-acetylene welded. Flat flame, open burner; 25 to 50 candlepower. Three-inch reflector with umbrella top and extension piece to prevent lamp from tipping. Height 7 in.; weight 2 lbs. Burns 6 1/2 to 9 hours on one charge (according to size of burner).

No. 210 ..... Each \$4.00

### HAND LAMP



No. 35

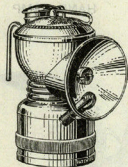
Galvanized iron. Made to meet the demand for a low-priced lamp of large capacity. Burns full shift on one charge. Height 6 1/2 in.; weight 15 oz. Furnished as shown in cut or with folding handle and hook for superintendent's use.

No. 35 ..... Each \$2.40  
With 3 in. Sparker Reflector ..... 2.90

## CARBIDE LAMPS

## PIONEER

Pioneer miners' cap lamps have large water tank, giving greater capacity without increasing weight. Notches on top of lamp hold valve lever in position. Knurled band on container, which strengthens it and enables the miner to get a firm grip when unscrewing container. Water cap non-leakable—water will not run down miner's neck. Burner tube and hook that cannot be twisted loose. Felt holder easy to put on and take off. All parts readily accessible for cleaning. With the extras which can be supplied from stock they can be made wind-proof, shot-proof and drip-proof at nominal additional cost.



No. 130

With automatic water feed, lava burner, rigid removable reflector. Burns 3 hours on one charge. Valve construction is proof against change of regulation and loss of light due to swing of miner's head. Equipped with spark lighter.

No. 130	Each	\$1.25
---------	------	--------

## CAP LAMPS



No. 125

With bottom valve feed, lava burner, rigid removable reflector. Burns 3 hours on one charge. Equipped with spark lighter.

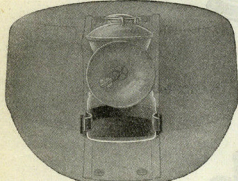
No. 125	Each	\$1.25
---------	------	--------

## EXTRAS FOR MINER'S LAMPS

Wind Caps	Each	\$0.05
Shot-proof Attachment on Lamp		.10
Extra Plain Containers		.20

Extra Shot-proof Containers	Each	\$0.50
Carbide Can—Curved		.15

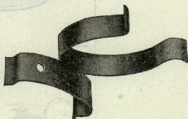
## MINER'S CAP



Heavy white duck. Complete with lamp attachment. Very serviceable.

Miner's Cap	Per doz.	\$3.50
-------------	----------	--------

## CAP CLIPS



Takes the place of spreader wires. Can be used on regulation miner's cap or riveted on miner's hat; also fastens to lapel of coat.

Cap Clips	Per doz.	\$1.20
-----------	----------	--------

CANDLESTICK ATTACHMENT  
(OR LAMP HOLDER)

No. 73

Solid steel. Snaps on lamp easily and holds it securely; easily jammed into timbers or earth.

No. 73	Per doz.	\$5.00
--------	----------	--------

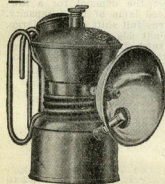
## BURNER CLEANER



No. 62

With ring to fasten to lamp.

No. 62	Per doz.	\$0.60
--------	----------	--------



No. 29

## PIONEER SPORTMAN'S LAMP

Highly polished, nickel finish. Equipped with sparker lighter; no matches required. Reflector  $2\frac{1}{4} \times \frac{3}{4}$  in. Height  $3\frac{1}{2}$  in.; weight  $6\frac{1}{2}$  oz. Burns 3 hours on a single charge. Extra carbide container furnished with each lamp, giving a total capacity of 6 hours.

No. 29	Each	\$1.50
--------	------	--------