

GENERAL

CATALOGUE

NO  
26

UNION  
HARDWARE & METAL  
COMPANY

1893

**CARBIDE LAMPS AND LANTERNS**

**JUSTRITE MINERS' LAMPS**

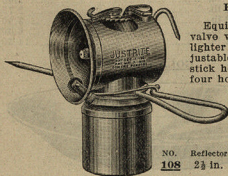


Cap

Has automatic generator and new spiral feed which will not clog; does not require agitation to obtain water as needed. Hook riveted and soldered. Lava burner tips. Self-lighter attachment.

NO.	Reflector	Wt. Each	DOZEN
<b>124</b>	2½ in.	¾ lb.	\$24.00

Half Shift



Equipped with lever valve water feed, self-lighter attachment, adjustable candlestick & stick hook. Burns for four hours.

NO.	Reflector	Wt. Each	DOZEN
<b>108</b>	2½ in.	¾ lb.	\$30.00

Superintendent



Equipped with sparkler attachment and large hook for holding handles. Burns four hours.

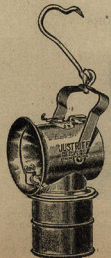
NO.	Reflector	Wt. Each	DOZEN
<b>95</b>	3 in.	¾ lb.	\$35.00

Western Special

Similar in construction to No. 95, except heavier and has knurled container.

NO.	Reflector	Wt. Each	DOZEN
<b>105</b>	3 in.	1½ lb.	\$50.00

ONE IN A BOX

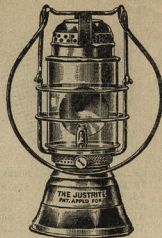


Arizona Special

Justrite "Arizona Special," polished heavy brass, burns 5 hours, new automatic generator, lever valve water feed, lighter attachment, ball and hook, carbide can, retainer has knurled sides.

NO.	Reflector	Wt. Each	DOZEN
<b>88</b>	3 in.	1½ lb.	\$50.00

**JUSTRITE CARBIDE LANTERNS**



A new idea in lantern construction. Acetylene gas has for many years been used for lighting, but until now has never been applied to portable lanterns.

This lantern is original in design. Is constructed of sheet brass and brass wire, nickel plated.

The reservoir and carbide pot are constructed of drawn seamless brass, and guaranteed perfect in construction and workmanship. Full nickel plated.

NO.	Wt. Each	EACH
<b>10</b>	1 lb.	\$8.50

PACKED AS WANTED

**UNION CARBIDE**



Union Carbide is crushed, carefully screened and packed. For use in acetylene lamps or lighting systems.

**Lamp**

NO.	Container	Case Contains	CASE
<b>1100A</b>	¾ in.	100lb Drum	\$15.50
<b>2100A</b>	1 in.	100lb Drum	15.50
<b>110A</b>	¾ in.	10lb Can	6 Cans 13.25
<b>210A</b>	1 in.	10lb Can	6 Cans 13.25
<b>2A</b>	¾ in.	2lb Can	24 Cans 12.00

**Miner's Lamp**

NO.	Size	Container	Case Contains	CASE
<b>100M</b>	100lb	Drum		\$15.50
<b>25M</b>	25lb	Drum		4.25
<b>10M</b>	10lb	Can	6 Cans	13.25
<b>2M</b>	2lb	Can	24 Cans	12.00

**House Lighting**

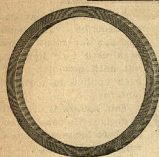
For use in house lighting systems. Stock carried only in 100lb Drums.

NO.	Size	Nothing Smaller Than	EACH
<b>3100L</b>	(Lump)	3½x2 in.	¾-in. Pieces \$15.25
<b>4100E</b>	(Egg)	2 x 1 in.	2-in. Pieces 15.25
<b>5100N</b>	(Nut)	1½x¾ in.	¾-in. Pieces 15.25
<b>6100Q</b>	(Quarter)	1x1-12 in.	1-12 in. Pieces 15.25

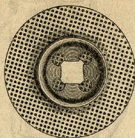
NOTE—No. 6100Q is adapted for use in generators in which carbide is fed in water. All pieces are graded. Contains no dust.

## MINERS' SUPPLIES

## MINERS' LAMP PARTS

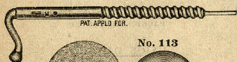


No. 90



No. 97S

No.	Part	For Lamp	DOZEN
90	Flat Rubber Gasket	93, 83, 105	\$1.50
97S	Perforated Screen	93, 83, 105	1.25
172	Flints	All	.75
177	Lighters, Complete	All	2.00
37	Tip Cleaners	All	1.50



No. 113

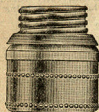


Nos. 62 and 97F

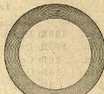


No. 64

No.	Part	For Lamp	DOZEN
62	Felt for Gas	100, 95, 108, 109	\$0.50
97F	Felt for Gas	93, 83, 105	.75
113	Valve Stems for Spiral Feed	125	4.00
64	Felt Holder	100, 95, 108, 109	.75



Nos. 68 and 69



No. 60

No.	Part	For Lamp	DOZEN
68	Bottoms	124	\$3.00
60	Flat Rub'r Gasket	100, 95, 108, 109	.50
69	Bottoms	105	4.00
28	Jewel Lava Tips	All	1.00

## MINERS' CANDLESTICKS

Sierra

Hand forged from tool steel.



No.	Size	Spike	Wt. Doz.	DOZEN
12	3x11 in.	8 3/4 in.	4 1/2 lb.	\$10.00

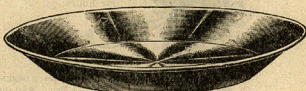
## MORTARS WITH PESTLES



Cast iron, bell shape, heavy broad base, ground inside, Japanned outside; Japanned pestle, ground end.

No.	Capacity	Wgt. Each	EACH
1	3/4 pt.	3 1/2 lb.	\$1.50
2	1 pt.	6 lb.	2.00
3	1 qt.	9 1/2 lb.	2.75
4	2 qt.	12 lb.	3.50
5	4 qt.	22 lb.	6.00
6	8 qt.	41 lb.	11.50

## GOLD PANS



Smooth steel; No. 41, plain; No. 42, polished.

No.	Diam. Top	Diam. Bottom	Height	Wgt. Doz.	DOZEN
41	16 1/2 in.	10 1/2 in.	2 1/2 in.	21 lb.	\$10.50
42	16 1/2 in.	10 1/2 in.	2 1/2 in.	21 lb.	12.00

## DRILL SPOONS

Made of 5-16 inch round Norway iron; sharp pointed one end, spoon on other end.

No.	Length	Wt. Doz.	DOZEN
36	36 in.	13 lb.	\$10.00
48	48 in.	24 lb.	12.50

## MINERS' RESPIRATORS



Cover's patented automatic improved respirators. Substantially made of white rubber; heavy cloth straps.

No.	Wt. Doz.	EACH
11R	3 1/2 lb.	\$5.00