

H. Channon
Company

CHICAGO

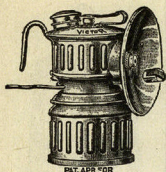
1875 — 1925

CATALOG
999
LISTS
PRICES

MACHINERY
TOOLS AND SUPPLIES

Justrite Carbide Lamps

For Campers, Miners, Contractors, Hunters, Etc.



Pat. Apr. 20, 1904
No. 407

Carbide Cap Lamps

Nos. 407 and 661

Made of brass. Height, 3 inches. Have self-lighter attachment. Burn 2½ hours on 2 oz. charge of carbide. Weight, 5 oz. each.

Price, each \$1.25



No. 661

Hand Lamps

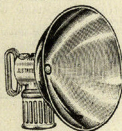
Justrite hand lamps are very useful for inspection purposes as well as for campers. They have folding handles and reflectors which throw a large volume of light. The No. 39 lamp has a 7-inch, highly nickel plated reflector and the No. 95 has a 3-inch nickel plated reflector. Both lamps are all nickel plated and are packed one each in a cardboard box.

No. 39 Lamp

Burning capacity, 4 hours on 3 oz. charge of carbide.

Height, inches 7
Diameter of reflector... 7
Weight, ounces 9

Price, each \$3.00

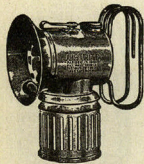


No. 39

No. 95 Lamp

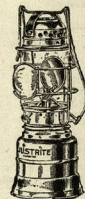
Burning capacity, 4 hours. Equipped with No. 170 flame protector. Charge, 3 oz. carbide. Height, 4¾ in. Weight, 7 ounces.

Price, each \$2.50



No. 95

No. 12 Carbide Lantern



This lantern is dependable in every way and is a great favorite with sportsmen. Gives a bright, penetrating 20 candle power light, burns 3 to 4 hours with 3 ounces of carbide, flame is controlled by valve and can be turned high or low or extinguished as desired. Highly nickel plated, equipped with detachable bull's eye lens and reflector. Equipped also with self lighting attachment—no matches required, no complicated parts to get out of order and easy to operate.

Superior to any portable light in cleanliness, safety and candle power, no smoke or grease, will not blow out.

It has proven its efficiency and has no peer for lighting the camp, motor boating, canoeing, hunting, fishing and going thru the woods and in fact for all outdoor lighting it is invaluable.

Can be packed with the camping outfit or in the trunk without danger of spoiling food or clothing.

Price, each \$6.00

Justrite Headlight

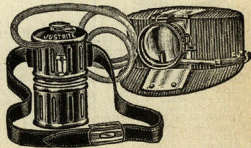
The perfect light for general out-door work at night. The light, being worn on the cap, leaves both hands free for any work. It is one of the most practical head lights made. The light weighs only 5 ounces and having a self-lighter attachment, no matches are required. It has a strong rubber hose, steel generator, and a burning capacity of 5 to 6 hours. The belt is included with the outfit, but cap and special concentrating lens must be purchased extra.

Price, each \$6.00

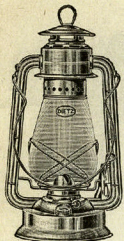
Carbide

For use in all lamps. Put up in 2-pound cans.

Price, per can \$0.40
100-pound drums. Price, per drum 7.00



Dietz Kerosene Lanterns



No. 2 Blizzard

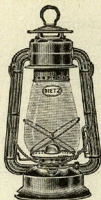
The standard for excellence among lanterns of high globe, cold blast type.

Height—14 3/4 inches.
Light—10 candlepower.
Wick—1 inch.

Burns—20 hours.
Globe-Dietz "Blizzard-Fitz-all Loo-Nob."

Burner—No. 262 (Steel).
Package—Half Dozen.

Per Doz. White Globes . . . \$20.00
Per Doz. Ruby Globes . . . 23.10



Junior

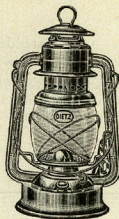
Smaller size of great efficiency.

Height—12 inches.
Light—6 candlepower.
Wick—5/8 inch.

Burns—15 hours.
Globe-Dietz "Junior."

Burner—No. 201 (Steel).
Package—One Dozen.

Per Doz. White Globes . . . \$13.50
Per Doz. Ruby Globes . . . 16.60



Little Wizard

The little lantern with the big light. Specially priced for popular use.

Height—11 1/2 inches.
Light—6 candlepower.
Wick—5/8 inch.

Burns—20 hours.
Globe-Dietz "Little Wizard Loo-Nob."

Burner—No. 201 (Steel).
Package—One Dozen.

Per Doz. White Globes . . . \$13.50
Per Doz. Ruby Globes . . . 16.60



No. 2 D-Lite

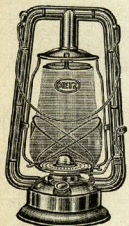
Embodies the latest ideas in high grade lantern making.

Height—13 1/4 inches.
Light—10 candlepower.
Wick—1 inch.

Burns—20 hours.
Globe-Dietz "D-Lite Loo-Nob."

Burner—No. 262 (Steel).
Package—Half Dozen.

Per Doz. White Globes . . . \$20.00
Per Doz. Ruby Globes . . . 23.10



Monarch

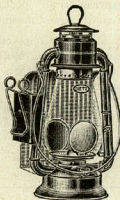
The old reliable round tube No. 0 with all latest improvements. Best lantern of its kind ever made.

Height—13 1/4 inches.
Light—4 candlepower.
Wick—5/8 inch.

Burns—20 hours.
Globe-Dietz "Blizzard-Fitz-all Loo-Nob."

Burner—No. 411 (Steel).
Package—One Dozen.

Per Doz. White Globes . . . \$12.50
Per Doz. Ruby Globes . . . 15.60



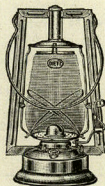
Junior Wagon Lantern

Compact size and dependable—note bullseye lens. Also shows ruby rear signal. Comes with flat wagon bracket.

Height—12 inches.
Light—10 candlepower.
Wick—5/8 inch.

Burns—15 hours.
Globe—Dietz "Junior."
Burner—No. 201 (Steel).
Package—Half Dozen.

Price per Doz. \$27.00



Little Star

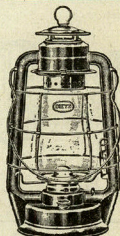
A well made small lantern with square tubes.

Height—11 inches.
Light—3 candlepower.
Wick—5/8 inch.

Burns—20 hours.
Globe—Dietz "Junior."
Burner—No. 411 (Steel).

Package—One Dozen.

Per Doz. White Globes . . . \$12.25
Per Doz. Ruby Globes . . . 15.35



No. 2 Blizzard Mill Lantern

Approved by the Insurance Inspection Department. Extra well braced at all points. Safety oil well. May be padlocked to prevent exposure of flame.

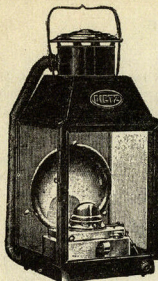
Height—14 3/4 inches.
Light—10 candlepower.
Wick—1 inch.

Burns—20 hours.
Globe—Dietz "Blizzard-Fitz-all."

Burner—No. 252 (Steel).
Package—Half dozen.

Price per Doz. \$47.00

Dietz Kerosene Lanterns



Dietz "Imperial" Platform Lantern

For Kerosene

Highest quality, requires little care, no chimney to clean. Green enamel finish.

- Height—21 inches.
- Light—60 candlepower.
- Wick—1½ inches.
- Burns—17 hours.
- Burner—No. 303 (Steel).
- Reflector—8 inches.
- Package—One only.

Price, each.....\$13.75

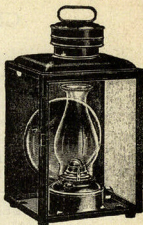
Dietz "Climax" Platform Lantern

For Kerosene

Wall or Platform Lantern at lower price. Serves many purposes. Green enamel finish.

- Height—17½ inches.
- Wick—1 inch.
- Burns—23 hours.
- Burner—No. 162.
- Chimney—No. 2 Sunbulb.
- Reflector—8 inches.
- Package—One only.

Price, each.....\$7.15



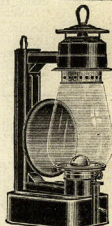
Dietz No. 25 Wall Lantern

For Kerosene

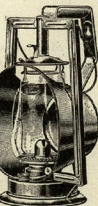
Excellent for tents, cabins, outdoor kitchens, piazzas, etc. Not suitable as a hand lantern. Green enamel finish.

- Height—15 inches.
- Light—25 candlepower.
- Wick—1 inch.
- Burns—35 hours.
- Globe—"Blizzard-Fitzall."
- Burner—No. 262 (Steel).
- Reflector—6 inches.
- Package—Half dozen.

Price, doz.....\$43.50



Dietz "Acme" Inspector's Lantern



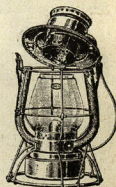
For Kerosene

Being standard on all railroads of importance, the Dietz "Acme" is the acme of perfect construction and lighting power. Non-heating handle and wire bail.

- Height—15½ inches.
- Light—20 candlepower.
- Wick—¾ inch.
- Burns—20 hours.
- Globe—Dietz "Blizzard-Fitzall."
- Burner—No. 551 (Steel).
- Reflector (Silvered Glass)—5 inches.
- Package—Half dozen.

Price, doz.....\$36.50

Dietz "Vesta" Railroad Lantern



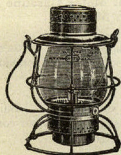
For Kerosene

The trail-breaking Vesta that first disproved the belief that signal oil only must be used in trainmen's lanterns. Gives double the light at one-third the cost for oil. The best lantern Dietz makes for any purpose.

- Height—11 inches.
- Light—3 candlepower.
- Wick—¾ inch.
- Burns—16 hours.
- Globe—Dietz "Vesta."
- Burner—No. 500 (Steel).
- Package—One dozen.

Price, doz.....\$31.85

Dietz "Vulcan" Railroad Lantern



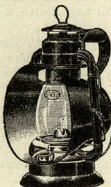
For Signal Oil

Very strong construction. Dependable signalling lantern of low candlepower.

- Height—10 inches.
- Light—2 candlepower.
- Wick—1 inch.
- Burns—24 hours.
- Globe—Dietz "Vulcan" (No. 39).
- Burner—No. 1 Extra Special Ratchet.
- Package—One Dozen.

Price, doz.....\$23.90

Dietz "Ideal" Inspector's Lantern



For Kerosene

For railroad car inspectors and watchmen. Regulation wire bail and stationary handle with non-heating grip.

- Height—11½ inches.
- Light—15 candlepower.
- Wick—¾ inch.
- Burns—18 hours.
- Globe—Heat-resisting Dietz "Vesta."
- Burner—No. 201 (Steel).
- Reflector—4 inches.
- Package—Half dozen.

Price, doz.....\$43.50

Globes for Dietz Kerosene Lanterns

Dietz "Blizzard-Fitzall Loc-Nob"



This new Loc-Nob Globe fits all Dietz Lanterns that formerly required "Blizzard" Cold Blast or "Fitzall" No. 0 Globes. It simplifies stock and adds the selling feature of Loc-Nob Globe protection to various Dietz Lanterns formerly without it.

New Standard on Dietz No. 2 Blizzard and on Dietz Mill and Wall Lanterns.

Height, $6\frac{3}{16}$ inches; diameter, top, $2\frac{13}{16}$ inches; diameter, bottom, $3\frac{3}{16}$ inches.

Price Per Doz. White.....\$1.56

Price Per Doz. Ruby..... 3.88



Dietz "Junior"

For "Junior" and "Little Star" Hand Lanterns and "Junior" Wagon Lantern.

Height..... $5\frac{1}{2}$ in.

Diameter top..... $2\frac{3}{8}$ in.

Diameter bottom..... $2\frac{13}{16}$ in.

Price Doz. White... \$1.56

Price Doz. Ruby.... 3.88



Dietz "D-Lite Loc-Nob"

For No. 2 "D-Lite" Lanterns.

Height..... $4\frac{5}{8}$ in.

Diameter top..... $4\frac{1}{16}$ in.

Diam. bottom..... $3\frac{7}{16}$ in.

Price Doz. White\$1.56

Price Doz. Ruby 3.88

Dietz "Little Wizard" Loc-Nob"

For "Little Wizard" Hand Lantern.

Height..... $3\frac{13}{16}$ in.

Diameter top..... $3\frac{1}{4}$ in.

Diameter bottom..... $2\frac{13}{16}$ in.

Price Doz. White... \$1.56

Price Doz. Ruby... 3.88



"Dietz Vesta"

For "Vesta" Railroad Lantern and "Ideal" Inspector's Lantern.

Height..... $4\frac{5}{16}$ in.

Diameter top..... $2\frac{3}{16}$ in.

Diameter bottom..... $2\frac{3}{4}$ in.

Price Doz. White... \$1.88

Price Doz. Ruby... 4.70



Dietz "Vulcan" (No. 39)

For "Vulcan" and Railroad Lanterns.

Height..... $5\frac{1}{16}$ in.

Diameter top..... $2\frac{1}{2}$ in.

Diameter bottom..... $3\frac{1}{4}$ in.

Price Doz. White... \$1.88

Price Doz. Ruby... 4.70



"Nulite" Gasoline Lanterns

Make and Burn their own Gas from Common Motor Gasoline Generate and Light with a Common Match

It produces a 400 candle-power light (equal to twenty ordinary kerosene wick lanterns) continually for 13 hours on one filling—one quart of common motor gasoline—costs only one cent a night for 3 hours' burning.

Lantern is the highest development in a portable outdoor light. Built as it is to withstand the hardest use and under the most trying weather conditions it is really a lighting marvel for city, town and country.

Unaffected by high wind, rain, snow and sleet, it can be carried right through the fiercest storm.

Ideal for the farmer, ranchman, planter, dairyman, poultryman, and truck-gardener for night and early morning choring in the barn, milk-shed and feed-lot—used extensively by warehousemen, night-watchmen, liverymen and hotel-keepers—just the thing for campers, travelers, hunters and sportsmen—popular for chautauquas, camp-meetings, shows, carnivals—splendid for street lighting in small towns and summer resorts.

Price, Each\$10.00

